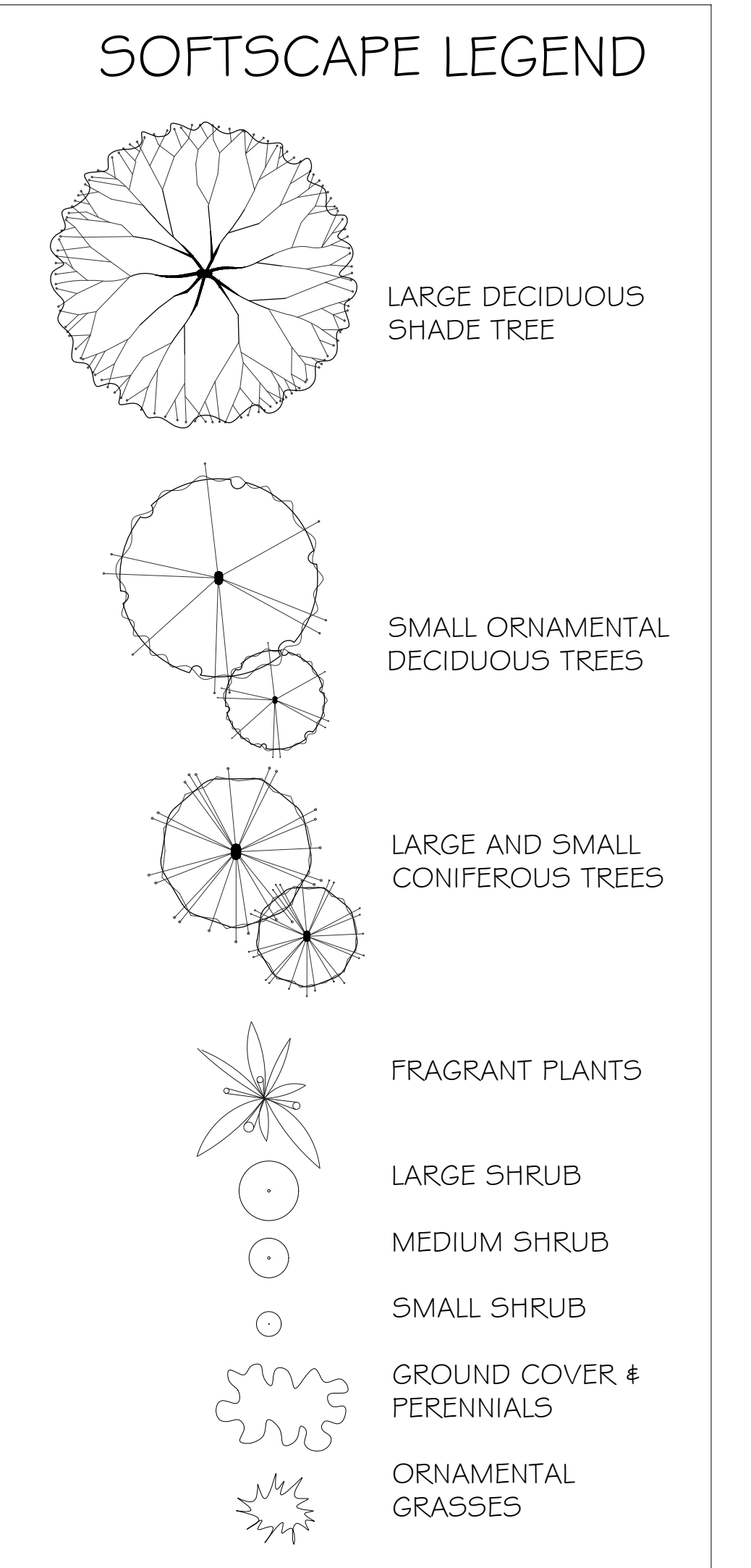


SUGGESTED PLANT LIST

Key	Common Name	Latin Name	Size
Trees			
JMAP	Japanese Maple	Acer palmatum var. Bloodgood	6m Cal.
FR03	Pacific Dogwood (N.F.)	Cornus nuttallii var. Edsall's White Wonder	6m Cal.
GR03	Paperbark Maple	Acer glabrum	5m cal.
DOCTO	October Glory Red Maple	Acer rubrum var. 'October Glory'	6m cal.
KIAMA	Kelms Magnolia (F)	Magnolia kelsoana	5m cal.
RMAP	Red Maple	Acer rubra var. 'Red Sunset'	6m cal.
VMAP	Vine Maple (N)	Acer circinnatum	6m Cal.
FR04	Autumn Flowering Cherry	Prunus adamsii	5m cal.
FR05	Forbesii Lantana	Prunus laurocerasus	6m Cal.
Large Shrubs			
FR06	Lily of the Valley Shrub (F)	Prunella japonica var. Forest Flame	#5 Pot
FR07	Rhododendron (N)	Rhododendron var. 'Macrophyllum'	#5 Pot
SMAG	Star Magnolia (F)	Magnolia stellata	#5 Pot
NINE	Ninebark (N.F.)	Physocarpus opulifolius var. 'Dialho'	#5 Pot
SAV01	Red Elderberry (N.F.F)	Sambucus racemosa	#5 Pot
FR08	Dark Leaf Hydrangea (F)	Hydrangea serratifolia var. 'Snow Queen'	#7 Pot
LRFD	Rhododendron	Rhododendron var. 'Anah Knysna'	#5 Pot
TAK	Eddies Yew	Taxus x media var. 'T.M. Eddies'	1.5m Int
FR09	Butterfly Bush (F)	Buddleia davidii var. 'Black Knight'	#5 Pot
FR10	Lilac (F)	Syringa vulgaris	#5 Pot
FR11	California Lilac (F,N)	Calochortus thyrsiflorus var. 'Victoria'	#5 Pot
Medium Shrubs			
FR12	Glossy Abelia (F)	Abelia x grandiflora	#2 Pot
FR13	Mountain Clematis (F)	Clematis recta var. 'Nictes Pearl'	#2 Pot
FR14	Dwarf Oregon Grape (N.F.F)	Mahonia aquifolium var. 'Compacta'	#2 Pot
FR15	Rhododendron	Rhododendron var. 'Uniquo'	#2 Pot
FR16	Red Flowering Currant (N.F)	Ribes sanguineum var. 'King Edward'	#2 Pot
FR17	Rhododendron	Rhododendron var. 'Fawcettii'	#2 Pot
FR18	David Viburnum (F)	Davidi Viburnum	#2 Pot
FR19	Dwarf Dogwood (F)	Euonymus alata var. 'Fireball'	#2 Pot
FR20	Hydrangea (F)	Lanceolata Hydrangea var. 'Little Quick Fire'	#2 Pot
FR21	Manzanita (F)	Arctostaphylos uva-ursi var. 'Topsy Turdy'	#2 Pot
FR22	Evergreen Nuthatch	Vaccinium ovatum var. 'Thunderbolt'	#2 Pot
Small Shrubs			
FR23	Evergreen Azalea	Azalea var. 'Gumpo Pink'	#2 Pot
FR24	Creeping Euonymus	Euonymus fortunei var. 'Emerald & Gold'	#1 Pot
FR25	Dwarf Lilac of the Valley Shrub (F)	Prunella japonica var. 'Prelud'	#1 Pot
FR26	Sword Fern (N)	Polystichum munitum	#1 Pot
FR27	Sweetbloss (F)	Baropocosa hookeriana humilis	#1 Pot
FR28	Dwarf Red Twig Dogwood (N)	Cornus amomum 'Red Twig'	#1 Pot
FR29	Shirohara Spirea (F)	Spirea japonica 'Shirohara'	#1 Pot
FR30	Nutka Rose (N.F)	Rosa Nutkana	#1 Pot
FR31	Azalea x Grandis Pleasant White	Grandis Pleasant White Azalea	#1 Pot
FR32	Crataegus (N)	Crataegus var. 'Heaven'	#1 Pot
FR33	Dwarf Hydrangea (F)	Thalictrum parviflorum var. 'Little Lime'	#1 Pot
FR34	Cascade Oregon Grape (F,N)	Mahonia nervosa	#1 Pot
FR35	Gold Flame Spirea (F)	Spirea humilis var. 'Gold Flame'	#1 Pot
FR36	Dwarf False Holly	Ilex ornata convexa	#1 Pot
Ground Covers			
FR37	Black Bugweed	Ajuga reptans 'Metallic'	SP5
FR38	Mountain Cranberry (N.F)	Vitis californica	SP4
FR39	Crataegus (N)	Prunella villosa	SP4
FR40	Scarlet Spirea (N)	Arctostaphylos uva-ursi var. 'Vancover-Jade'	SP4
FR41	Creeping Cottonaster (F)	Cottonaster dammen	SP4
Vines			
FR42	Evergreen Clematis (F)	Clematis amomum	#5 Pot
FR43	Clematis sp. (F)	Clematis Vine	#5 Pot
Perennials			
FR44	Asiatic (F)	Astilbe chinensis var. 'Pumil'	SP5
FR45	Monticola (F)	Crocus var. 'Lionel'	SP5
FR46	Dwarf Daylily (F)	Hemerocallis var. 'Stella d'Oro'	SP5
FR47	Conch Bell (N)	Heuchera micrantha var. 'Brazingham Bronze'	SP5
FR48	Sweet Iris	Iris pallida var. 'Aureo-Vanegata'	SP5
FR49	Lenten Rose	Helleborus Brandywine	SP5
FR50	Japanese Sedge	Carex nortoni 'Ice Dance'	SP5
FR51	Deer Fern (N)	Blechnum spicant	#1 Pot
FR52	Feather Reed Grass	Calamagrostis var. 'Tidorado'	#2 Pot
FR53	Blue Fescue	Festuca ovina glauca 'Elijah Blue'	#1 Pot
FR54	Blue Oat Grass	Holcus lanatus 'complanatus'	#1 Pot
FR55	Common Rush (N)	Juncus effusus	SP5
FR56	Black Eyed Susan (F)	Rudbeckia fulgida	#1 Pot
FR57	Flame Sedge	Carex testacea	#1 Pot
FR58	Lavender (F,F)	Lavandula angustifolia	#1 Pot
FR59			#1 Pot

Notes:
 - *P - Pollinator *N - Native *F - Food Bearing
 - All landscape work to conform with B.C.S.L.A. / B.C.M.T.A. standard specification.
 - All areas to be installed with an automatic underground system.



PAVER TYPES

01 TYPE: RIVER ROCK
 COLOUR: VICTORIAN
 PATTERN: JACK-ON-JACK
 SIZE: 24x24

02 TYPE: V55
 COLOUR: 50% DARK GREY,
 50% GREY
 PATTERN: STRETCHER BOND,
 PARALLEL TO BUILDING FACE
 SIZE: 3" x 12" x 4.3"

03 TYPE: CORTEZ SLAB
 COLOUR: SANDALWOOD
 PATTERN: JACK-ON-JACK
 SIZE: 18" x 18"

SUPPLIER: BELGARD PAVERS

LIGHTING LEGEND

BOLLARD LIGHTS (x17)
 DESC.: 2 ARM CONTEMPORARY PATH LIGHT
 MODEL: I5844AZT
 COLOUR: BRONZE METALLIC
 CONTACT: KICHLER LIGHTING

BENCH (x4)
 MODEL: ARCATA BENCH
 SIZE: 24" x 74" x 32", BACKED SURFACE
 MATERIAL: WOODGRAIN SERIES
 COLOUR: WOOD - JARRAH, POWDERCOAT METAL - BRONZE METALLIC
 CONTACT: LANDSCAPE FORMS

SHORT TERM BIKE RACKS (x5)
 MODEL: EMERSON BIKE RACK
 NOTE: MOUNTED TO CONCRETE PAD & PARALLEL TO BUILDING FACE.
 COLOUR: NEUTRAL SERIES - BRONZE METALLIC
 SUPPLIER: LANDSCAPE FORMS



THE DRAWINGS, DESIGN IDEAS AND FEATURES OF CONSTRUCTION DESCRIBED HEREIN ARE THE EXCLUSIVE PROPERTY OF FORSIE LANDSCAPE ARCHITECTURE. ALL COPYRIGHT AND PROPERTY RIGHTS ARE EXPRESSLY RESERVED. THEY ARE NOT TO BE REPRODUCED, COPIED, REPRODUCED, OR USED FOR ANY PURPOSES NOR ARE THEY TO BE ASSIGNED TO A THIRD PARTY WITHOUT EXPRESSED WRITTEN CONSENT. IN THE EVENT OF ANY UNAUTHORIZED USE OF THESE PLANS BY A THIRD PARTY, THE THIRD PARTY SHALL NOT HOLD FORSIE LANDSCAPE ARCHITECTURE RESPONSIBLE.

ARCH. STAMP

116 PRYDE APARTMENTS
 NANAIMO, BC

CLIENT
 BRYN EDWARDS

REV. DATE	NUMBER	DESCRIPTION
MAR 06, 2024	01	PRELIM. LANDSCAPE PLAN
MAR 29, 2024	02	REVISED LANDSCAPE PLAN

DATE: MARCH 29, 2024
 SCALE: 1:100
 DRAWN BY: RF

LANDSCAPE CONCEPT PLAN
 L1

